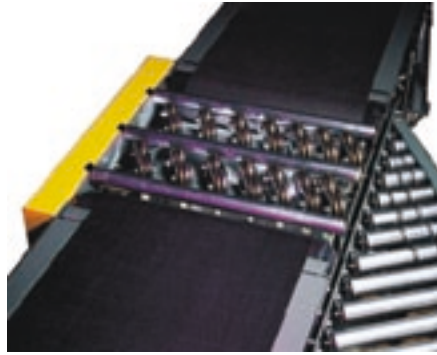


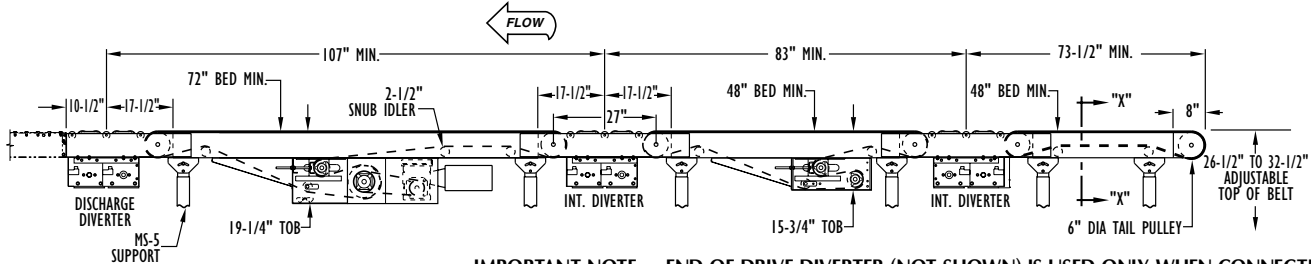
Model SC Horizontal Belt Sortation Conveyor

S O R T A T I O N

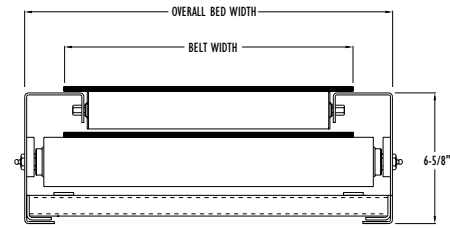
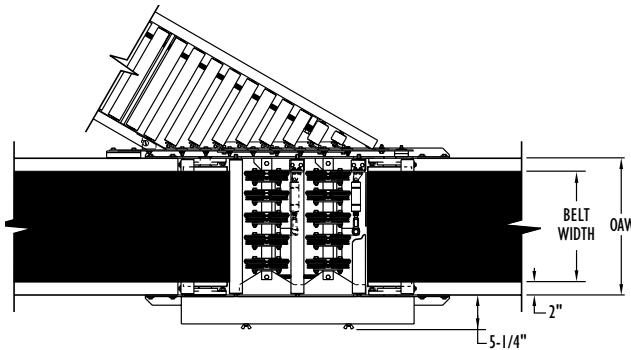
The Model SC is designed to function as a belt driven sortation conveyor. The belt concept provides a reliable method of tracking packages to the divert stations. The diverter may be controlled by photo cells, a code reader, a PC controller, or other established control methods.



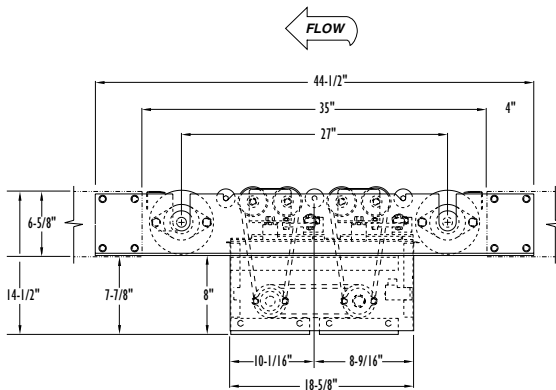
- ★ 5 Belt Widths
- ★ Right or Left Hand Diverts Available
- ★ Adjustable Floor Supports



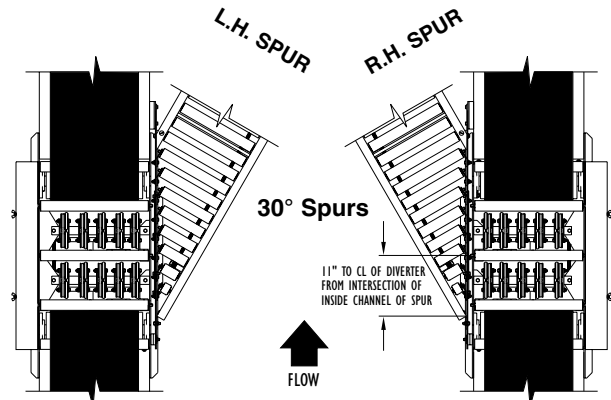
IMPORTANT NOTE: END OF DRIVE DIVERTER (NOT SHOWN) IS USED ONLY WHEN CONNECTING TWO SEPARATE SC CONVEYORS TOGETHER. OVERALL DIMENSIONS OF THIS DIVERTER ARE THE SAME AS AN INTERMEDIATE DIVERTER.



SECTION "X-X"



NOTE: ABOVE DRAWING IS AN INTERMEDIATE DIVERT

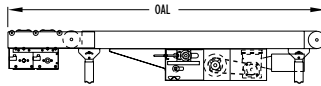


IMPORTANT NOTE: LOADS MUST BE ALIGNED TO THE SPUR SIDE OF THE MAIN SORTATION CONVEYOR

SIZE TO ORDER Overall Length "A"	STYLE		BELT WIDTH	14"	20"	24"	26"	30"	
			BED WIDTH	18"	24"	28"	30"	34"	
9'	Min	"A" ONE DIVERTER	WEIGHTS	781	909	990	1045	1122	
13'	Max			849	986	1073	1132	1216	
15'-11"	Min	"B" TWO DIVERTER		1211	1410	1538	1632	1752	
25'-11"	Max			1380	1602	1745	1848	1985	
22'-10"	Min	"C" THREE DIVERTER		1701	2043	2175	2311	2481	
38'-10"	Max			1971	2350	2506	2556	2723	
29'-9"	Min	"D" FOUR DIVERTER		2191	2576	2812	2990	3210	
51'-9"	Max			2562	2998	3267	3389	3721	
SIZE TO ORDER Overall Length "A"	STYLE			BELT WIDTH	14"	20"	24"	26"	30"
				BED WIDTH	18"	24"	28"	30"	34"
20'-3"	Min	"A1" ONE DIVERTER	WEIGHTS	1079	1260	1372	1444	1555	
24'-3"	Max			1147	1337	1455	1531	1649	
27'-2"	Min	"B1" TWO DIVERTER		1509	1761	1913	2031	2185	
37'-2"	Max			1678	1953	2127	2247	2418	
34'-1"	Min	"C1" THREE DIVERTER		1999	2394	2557	2710	2914	
50'-1"	Max			2404	2701	2888	3055	3156	
41'	Min	"D1" FOUR DIVERTER		2489	2927	3194	3464	3643	
63'	Max			2860	3349	3649	3863	4154	

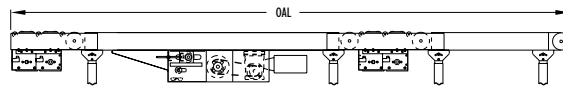
WEIGHTS AND DIMENSIONS FOR STYLE A1, B1, C1, & D1 ARE FIGURED WITH A 10' LONG BED ADDED TO STANDARD DRIVE AND DIVERTER CONFIGURATIONS.

STYLE "A"

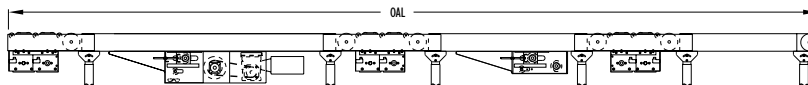


NOTE: MAXIMUM FOUR DIVERTERS ALLOWED PER DRIVE

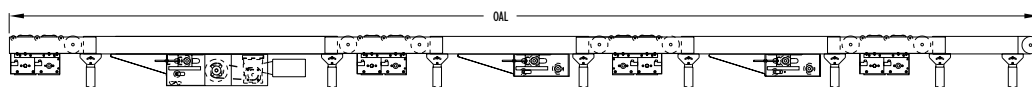
STYLE "B"



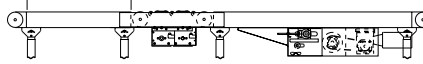
STYLE "C"



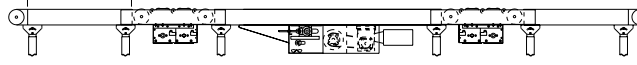
STYLE "D"



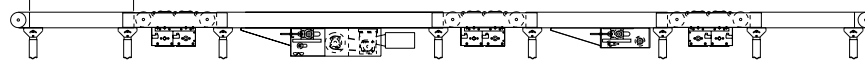
STYLE "A1"



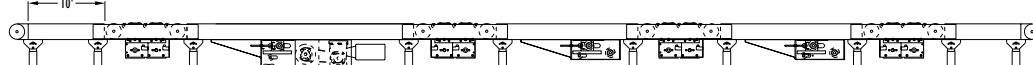
STYLE "B1"



STYLE "C1"



STYLE "D1"



Standard Specifications/Conveyor

BELT—Globe Ultimate 140 BOS (friction surface both sides). Clipper uni-bar lacing.

BED—Roller bed with 1.9 in. dia. x 16 ga. galvanized rollers spaced every 6 in. Mounted in 6-5/8 in. x 12 ga. powder painted formed steel channel frame bolted together with splice plates.

FLOOR SUPPORTS—Adjustable MS-5 type supports on conveyor sections and on diverters for 26-1/2 to 32-1/2 in. elevation. One support at every bed joint and at connection to diverter. Holes in feet for lagging to floor.

DRIVE PULLEY—8 in. dia. with 1-11/16 in. dia. shaft at bearings, machine crowned and fully lagged.

TAIL PULLEY—6 in. dia. with 1-7/16 in. dia shaft at bearings, machine crowned.

SNUB IDLER—Adjustable 2-1/2 in. dia. pre-lubricated ball bearings, regreaseable.

RETURN IDLER—Adjustable 2-1/2 in. dia. pre-lubricated ball bearings, regreaseable.

TAKE-UP PULLEY— 6 in. dia. with 1-7/16 in. dia. shaft at bearings, machine crowned.

TAKE-UP—Take-ups in center drive provides 16 in. of belt take-up. Underside take-up on intermediate sections between diverters provides 16 in. of belt take-up. Extends down 15-3/4 in. from top of belt.

BEARINGS—Sealed, pre-lubricated, regreaseable, self-aligning, ball bearings with eccentric lock collars on drive and tail pulleys. Pre-lubricated ball bearings in tread rollers.

SPEED REDUCTION—Sealed worm gear C-Face speed reducer. No. 60 roller chain to drive pulley.

MOTOR—1 HP – 230/460V – 3 Ph. 60 Hz. Totally Enclosed Fan Cooled C-Face.

ELECTRICAL CONTROLS—Not furnished as standard equipment. See below.

BELT SPEED—Constant 150 FPM.

CAPACITY—Maximum unit package weight 75 lbs. Maximum distributed load of 1200 lbs. with horsepower requirements as listed in chart. Maximum conveyor length is 60 ft. of bed plus diverters.

Standard Specifications/Diverter

CAPACITY—Maximum unit package weight –75 lbs.

PACKAGE SIZE—Minimum: 6 in. wide x 9 in. long. Maximum: 18 in. wide x 30 in. long. **NOTE: Small packages must not be top heavy.**

CYCLES—Up to 50 times per minute.

DIVERTER MECHANISM—Four rows of 3-1/8 in. dia. wheels with urethane treads driven by 3/8 in. dia. urethane belts.

AIR CYLINDER—1-1/4 in. dia. bore x 1 in. stroke double acting with internal rubber bumpers both ends.

AIR REQUIREMENTS—Minimum pressure 60 P.S.I., Maximum 125 P.S.I.-Free Air Consumption at 60 P.S.I., .028 cu. ft. per cycle

AIR VALVE—Single solenoid 4-way valve with speed controls. 1/4 in. NPT valve ports. Requires maintained electrical signal of 115V–1Ph. 60 Hz. from photo cell, limit switch, etc. (not supplied). Diverter will stay in diverted position until signal is broken. Current consumption: .09 amps holding.

ELECTRICAL CONTROLS—Not furnished as standard equipment.

INSTALLATION NOTE:—To eliminate contaminants in air supply line, a filter, regulator, lubricator (FRL) should be installed prior to valve (not supplied as standard).

DRIVE—Slave driven from main belt conveyor.

Quantity of Diverters	*HORSEPOWER REQUIREMENTS	
	150 FPM	200 FPM
1	1	1 1/2
2	1 1/2	2
3	2	3
4	3	3

*HP based on maximum of 60 ft. of bed with quantity of diverters as shown. Maximum distributed load of 1200 lbs. used in all cases.

 **FloStor**
Materials Handling Systems & Sales
(5 1 0) 2 6 5 - 6 7 0 0

Optional Equipment

DIVERTER MECHANISM—Two rows of 3 in. dia. wheels which are driven by 3/8 in. dia. urethane belts. Wheels are slave driven from belt conveyor. Raised and lowered pneumatically.

BELT SPEED—Other constant and variable speeds up to 200 FPM.

V-BELT DRIVE—V-belt supplied between motor and reducer.

GUARD RAILS—Continuous adjustable channel.

FLOOR SUPPORTS—Higher or lower than standard. Minimum elevation 19-3/8 in.

MOTORS—Energy efficient, single phase, other characteristics. 5 HP maximum.

ELECTRICAL CONTROLS—One direction magnetic starters and push button stations. Encoder also available

TAKE AWAY LINES—Both straight and curved spurs are available. Consult factory for recommendation of type and configuration.